

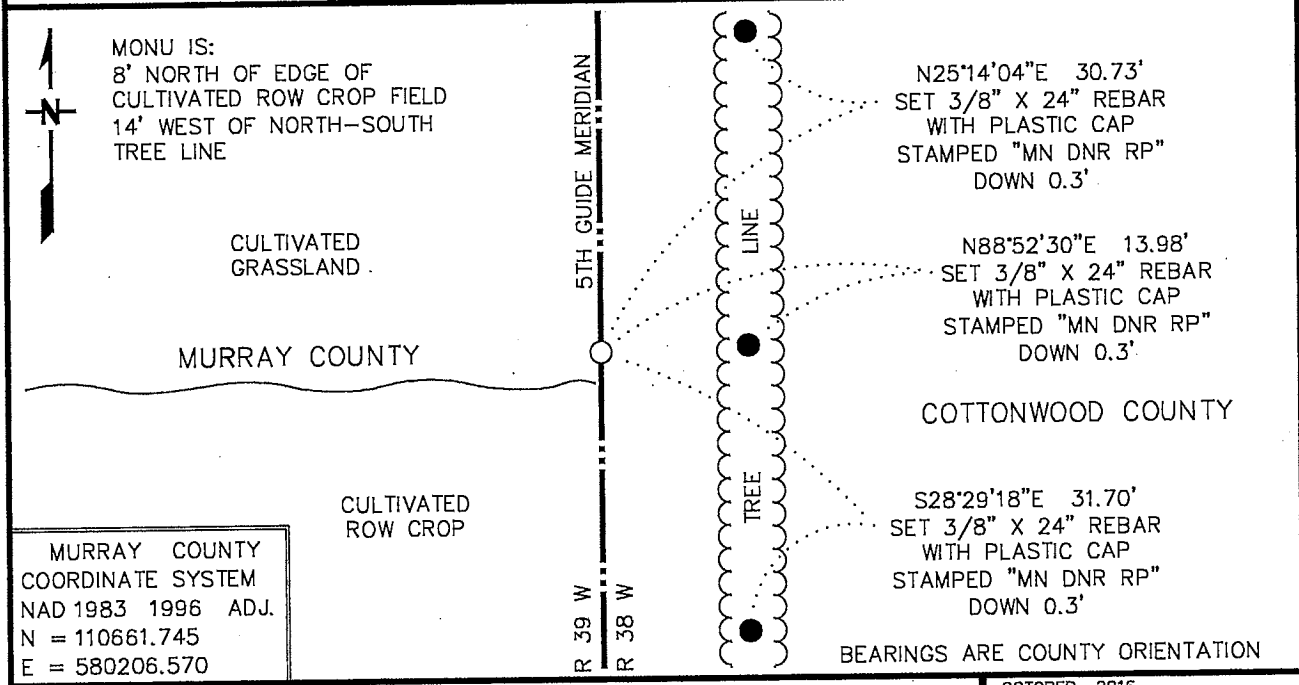
Index No. R-25

CERTIFICATE OF LOCATION OF GOVERNMENT CORNER

NORTHEAST Corner of Section 25, Township 105 N, Range 39 W
5TH Principal Meridian, State of Minnesota, County of MURRAY

At the corner location shown on the sketch:

- On _____ found a _____
DATE
- left monument as found, lowered monument, removed monument (explain)
- On 6/29/16 Placed a 3/4" X 24" REBAR WITH PLASTIC CAP STAMPED
DATE "MN DNR LS 17003", DOWN 1.5'



MURRAY COUNTY
COORDINATE SYSTEM
NAD 1983 1996 ADJ.
N = 110661.745
E = 580206.570

Statement of evidence for this corner location is on back of this page.

OCTOBER 2016
WMA09007

I hereby certify that this plan, specification, or report was prepared by me or under my direct supervision and that I am a duly Licensed Land Surveyor under the laws of the State of Minnesota.

SIGNATURE Bruce W. Shepherd DATE 12/6/16 License Number 17003
BRUCE W. SHEPHERD

The DNR Division of Lands and Minerals contacted the following for survey information:
Website - mngeo.state.mn.us for GLO plat and field notes
Website - murray-countymn.com for section and quarter section corner information
Cottonwood County Recorder's Office
Zieske Land Surveying Inc. of Windom

The following is from a Certificate of Location of Government Corner, signed by Bruce W. Shepperd, LS 17003, on December 20, 1985, and on file - not recorded - in the Murray County Recorder's Office:

This corner was originally established by the U.S. General Land Office survey in 1857.

The government notes show:

set post, deposited charcoal, made mound, trench, and pits and planted plum seed northeast and southwest

In April 1983, the DNR Bureau of Engineering contacted the following for corner information:

Cottonwood County Offices of the Recorder and Highway Engineer

Murray County Offices of the Recorder and Highway Engineer

Sioux Engineering of Windom

Martin Land Surveying of Worthington

The following information was obtained from the Cottonwood County Recorder's Office:

Plat 49 contains a resurvey of Township 105 North, Range 38 West done by C. W. Gove, County Surveyor, in 1898. Plat shows that corner was established:

598 feet west of meander corner number 15

1749 feet north of meander corner number 2

1227.5 feet south of meander corner number 3

A 2 ½" by 2 ½" by 30" cast iron stake was set to mark this location.

The following information was obtained from the Office of Sioux Engineering:

A copy of a resurvey plat of Township 105 North, Range 38 West, obtained from Howard Boeck of Westbrook, and done by C. W. Gove, County Surveyor, in 1898, shows corner but does not indicate what was found or set. Corner is shown:

598 feet west of meander corner number 15

1749 feet north of meander corner number 2

1227.9 feet south of meander corner number 3

The following information was obtained from the Cottonwood County Recorder's Office:

A resurvey plat of Township 105 North, Range 38 West, done by C.W. Gove, County Surveyor, in 1898, shows corner but does not indicate what was found or set. Corner is shown:

*598 feet west of meander corner number 15
1749 feet north of meander corner number 2
1227.9 feet south of meander corner number 3*

The following information was obtained from the Murray County Recorder's Office: Surveyor's Record Book A on Page 54 contains a survey date and surveyor not indicated. Survey shows corner but does not indicate what was found or set. Corner is shown:

40.60 chains (2679.60 feet) from the north quarter corner of Section 25

The following information was obtained from the DNR Bureau of Engineering's Office: A 1935 survey shows corner but does not indicate what was found or set. Corner is shown:

*1138 feet from meander corner number 3
1020 feet from a 1" by 18" iron stake that is on line between corner and meander corner number 3*

In 1952, this corner was established on the southerly extension of a line from the northeast corner of Section 24 to the east quarter corner of Section 24 and on the easterly extension of the center line of an east-west road west. Survey does not indicate what was set to mark this location.

In May 1983, the DNR Bureau of Engineering traversed to the area of the corner and found its location to be in a cultivated field. Then the lost position for corner was computed using the northeast corner of Section 36 and the east quarter corner of Section 24. A 50 foot diameter area the center being at the lost position was scanned with an electronic metal locator but no metal attraction was obtained. Also scanned a 25 foot diameter area 1020 feet north of the lost position with an electronic metal locator but no metal attraction was obtained.

Accept the lost position as the location of the corner.

Traverse information is available from the DNR Bureau of Engineering.

The sketch of reference ties shows the corner marked with a 1¼" x 1¼" x 20" perforated steel tube with aluminum cap stamped "DNR Survey Marker", up 0.2 of a foot with the following ties:

2647.56 feet from the east quarter corner of Section 24

2647.56 feet from the east quarter corner of Section 25

2016 June 29, the DNR Division of Lands and Minerals scanned a 15 foot diameter area with an electronic metal detector, the center being 2647 feet south of the east quarter corner of Section 24 but no metal attraction was obtained.

Then computed a position for the corner by using GLO proportional measurement from the northeast corner of Section 36 (southeast corner of Section 25) and the east quarter corner of Section 24. The computed position for the corner was found to be:

5295.08 feet from the southeast corner of Section 25

2647.53 feet from the east quarter corner of Section 24

Analysis of the above information led the DNR Division of Lands and Minerals to conclude that the computed position for the corner by using GLO proportional measurement from the northeast corner of Section 36 (southeast corner of Section 25) and the east quarter corner of Section 24 is the location of the corner.

A ¾ inch by 24 inch rebar with a plastic cap stamped "MN DNR LS 17003" was set to mark the location of the corner and ties were taken to it as shown on the sketch of reference ties.